

Bike Accident Summary

Table 1 shows the number of bicycle accidents in Fort Collins from January 1, 2000 -June 30, 2009.

TABLE 1 – BICYCLE ACCIDENTS BY YEAR

	2000	2001	2002	2003	2004	2005	2006	2007	2008	2009 ½ year	2008 %Δ vs. prev. 3 yr. avg.
Non-Injury Accidents	33	32	30	30	30	51	41	47	47	19	+1.4%
Injury Accidents	79	70	76	73	87	73	66	94	93	52	+19.7%
Fatal Accidents	1	0	0	0	1	0	0	0	2	0	n/a
Total Accidents	113	102	106	103	118	124	107	141	142	71	+14.5%

Table 2 shows the bicycle accident rate (in accidents per 1,000 population) in Fort Collins taking into account the population increase that has occurred. The average accident rate for the 9 year period is 0.93 accidents/1,000 population.

TABLE 2 – BICYCLE ACCIDENTS/1,000 POPULATION

	2000	2001	2002	2003	2004	2005	2006	2007	2008	2009	2008 %Δ vs. prev. 3 yr. avg.
Population (In Thousands)	118.6	112.5	124.4	125.4	126.9	127.6	129.5	134.1	136.4	137.2	
Accident Rate	0.95	0.91	0.85	0.82	0.93	0.97	0.83	1.05	1.04		+9.5%

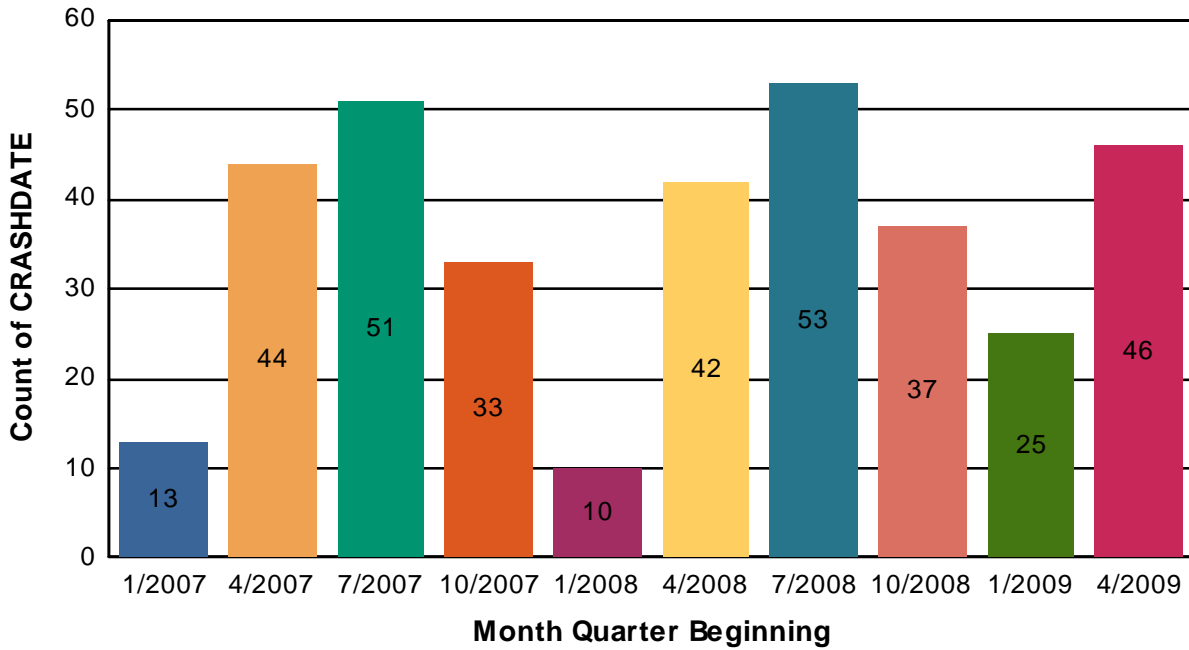
Table 3 shows the age of bicyclists involved in accidents in Fort Collins. Note that there were 42 bicycle accidents during this time period where the age of the bicyclist was not reported.

**TABLE 3 – BICYCLE ACCIDENTS
BY BICYCLIST AGE**

	2007	2008	2009 1/2	Total	% of Accidents
0-4	0	0	0	0	0
5-9	3	3	0	6	1.7
10-14	11	4	1	16	4.5
15-19	30	31	11	72	20.3
20-24	25	34	23	82	23.1
25-34	27	20	17	64	18.1
35-44	12	12	5	29	8.2
45-54	11	12	2	25	7.1
55-64	1	4	5	10	2.8
65-74	2	3	0	5	1.4
75-84	0	1	1	2	0.6
85+	0	0	1	1	0.3
Unknown	19	18	5	42	11.9
Total Accidents	141	142	71	354	100%

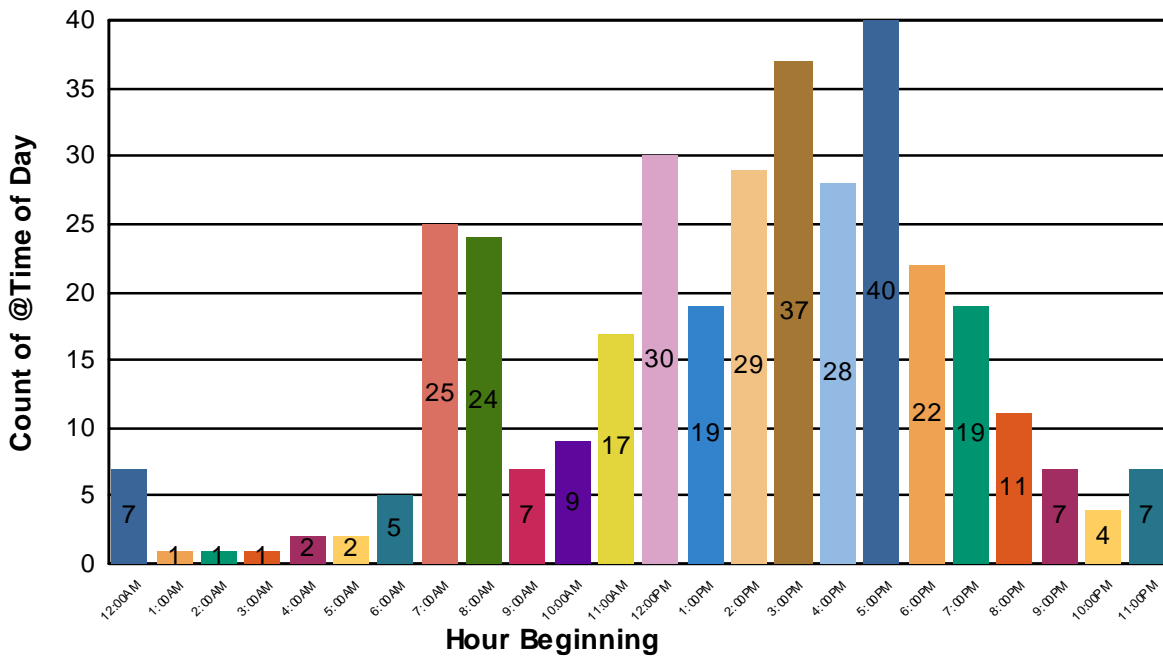
Collisions By Date For January 1, 2007-June 30, 2009

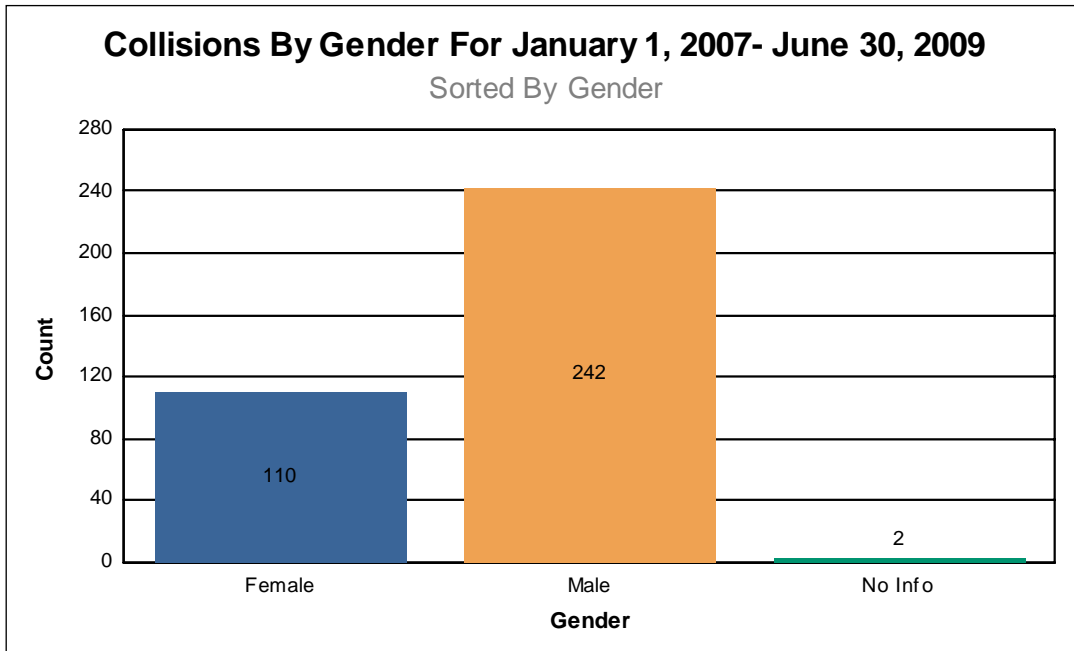
Sorted By Quarter



Collisions By Time For January 1, 2007-June 30, 2009

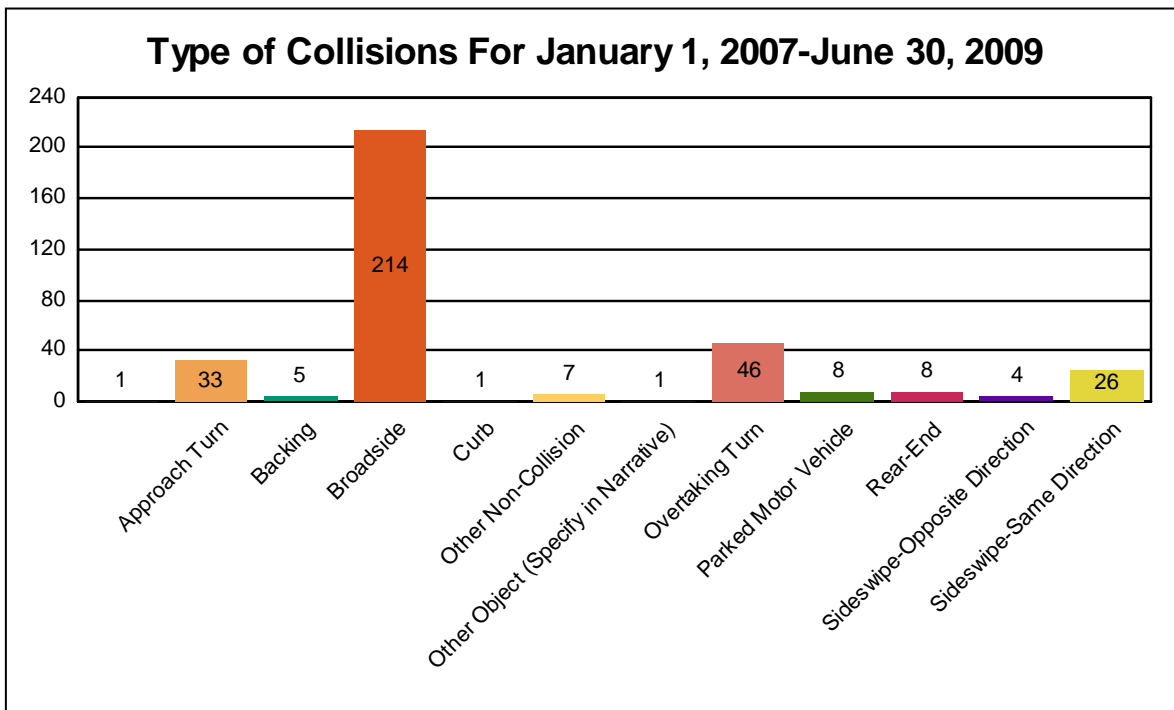
Time of Day





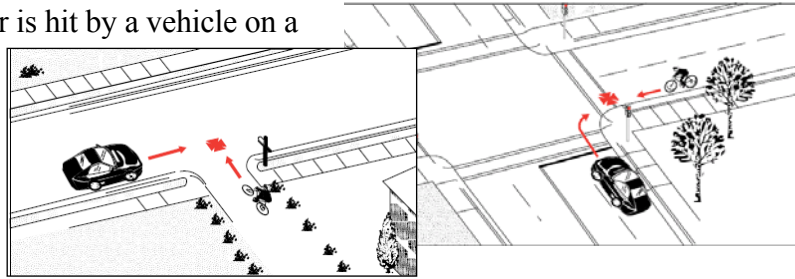
Types of Collisions

Bicycle accidents can be further broken down into various types of accidents based on the circumstances. Types of bicycle accidents and the number of each type in Fort Collins from 2007 – June 30, 2009 are shown below:



Broadside or Right Angle Accidents at Intersections – 214 Collisions (60.5%)

Accidents where a bicyclist hits or is hit by a vehicle on a perpendicular roadway/driveway.

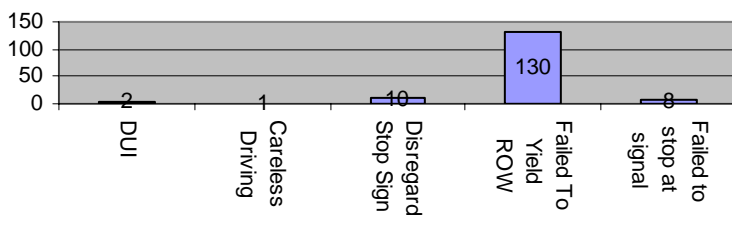


These accidents are further sub-categorized in the following table.

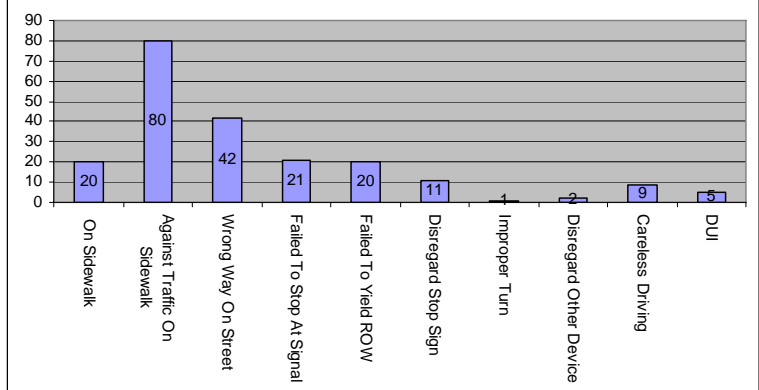
Broadside Collisions						
Description	Right Turning Vehicle	Left Turning Vehicle	Straight	Total Number of Collisions	Injury Collisions	Fatal
<u>Bike Riding <i>Against</i> Traffic</u>						
Bike on sidewalk/crosswalk	66	5	9	80	50	
Bike in the Street	32	7	5	44	25	
Bike Unknown Location	1	1	0	2	1	
<u>Bike Riding <i>Against</i> Traffic</u>	99	13	14	126	76	0
<u>Bike Riding <i>With</i> Traffic</u>						
Bike on sidewalk/crosswalk*	6	2	15	23	16	
Bike in the Street	7	12	25	44	34	
<u>Bike Riding <i>With</i> Traffic</u>	13	14	40	67	50	0
<u>Unknown Location of Bike</u>						
	8	2	11	21	10	
Total	120	29	65	214	136	0
*Note: two were at mid block pedestrian crossings						
Injury Collision	73	17	46			
Fatal Collisions						

Table 4

Contributing Factors-Motorist

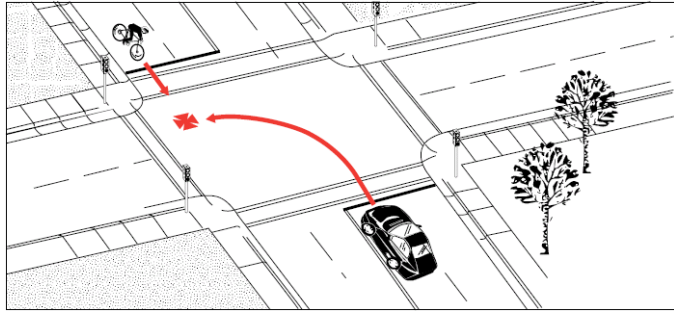


Contributing Factors-Bicyclist



Approach Turn Accidents at Intersections – 33 Collisions (9.3%)

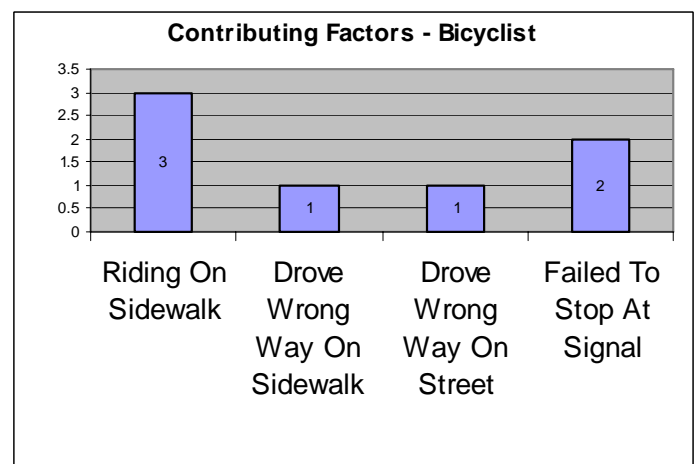
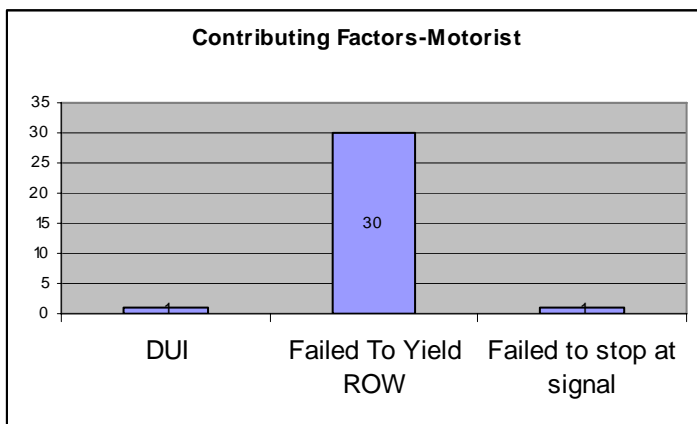
Accidents where a bicyclist hits or is hit by a vehicle approaching from the opposite direction and turning right or left.



These accidents are further sub-categorized in the following table.

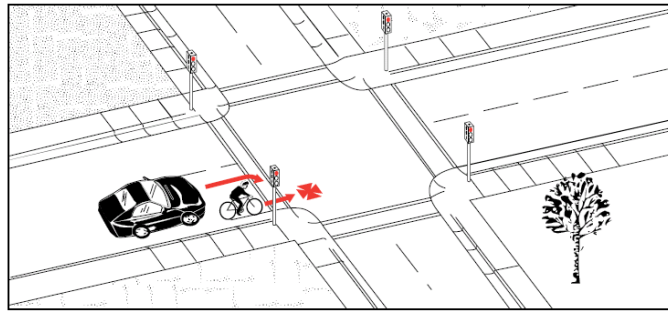
Approach Turns			
Description	Number of Collisions	Injury Collisions	Fatal
<u>Bike Riding <i>Against</i> Traffic</u>			
Bike on sidewalk/crosswalk	1		
Bike in the Street	1		
Bike Unknown Location	0		
<u>Bike Riding <i>Against</i> Traffic</u>	2	0	0
<u>Bike Riding <i>With</i> Traffic</u>			
Bike on sidewalk/crosswalk	3	2	
Bike in the Street	26	21	
Bike Unknown Location	1		
<u>Bike Riding <i>With</i> Traffic</u>	30	23	0
<u>Unknown Location of Bike</u>			
	1	1	
Total	33	24	0

Table 5



Overtaking Turn Accidents at Intersections – 46 Collisions (13.0%)

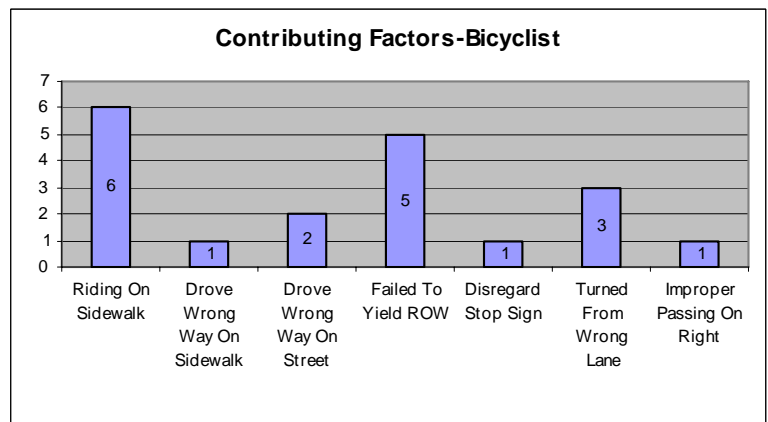
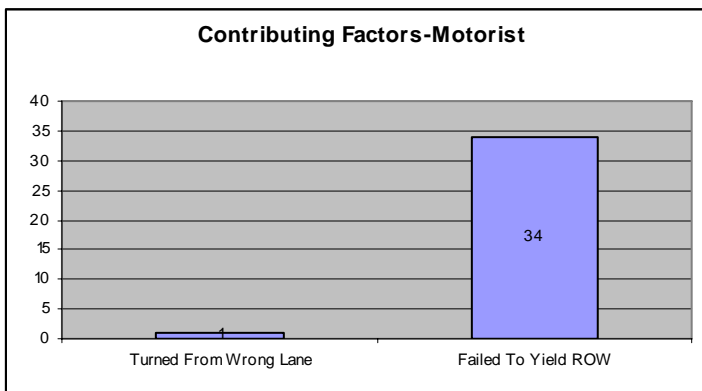
Accidents where a bicyclist hits or is hit by a vehicle traveling in the same direction as the bicyclist (approaching from behind) and turning right or left



These accidents are further sub-categorized in the following table.

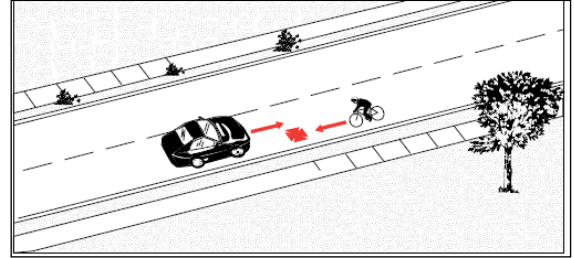
Overtaking Turns			
Description	# of Collisions	Injury Collisions	Fatal
<u>Bike Riding <i>Against</i> Traffic</u>			
Bike on sidewalk/crosswalk	1	1	
Bike in the Street	2	2	
<u>Bike Riding <i>Against</i> Traffic</u>	3	3	0
<u>Bike Riding <i>With</i> Traffic</u>			
Bike on sidewalk/crosswalk	6	6	
Bike in the Street	36	27	
<u>Bike Riding <i>With</i> Traffic</u>	42	33	0
<u>Unknown Location of Bike</u>			
	1		
Total	46	36	0

Table 6



Sideswipe Accidents – 30 Collisions (8.5%)

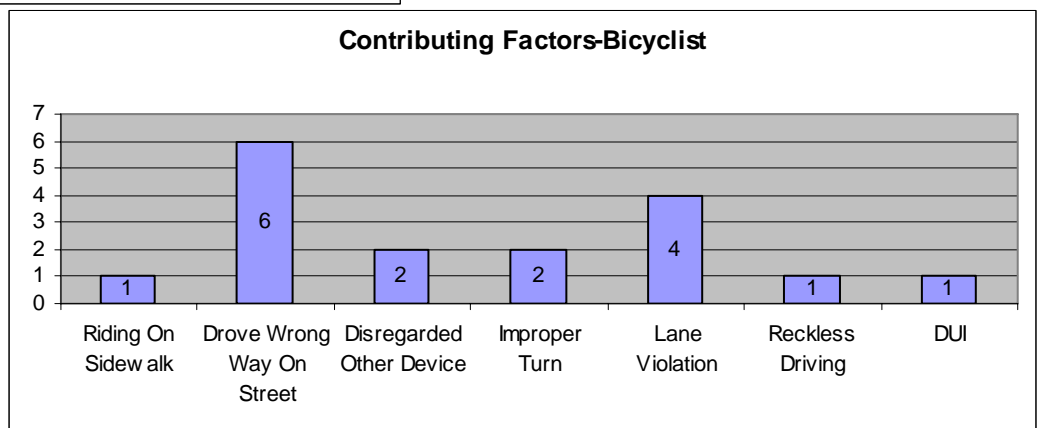
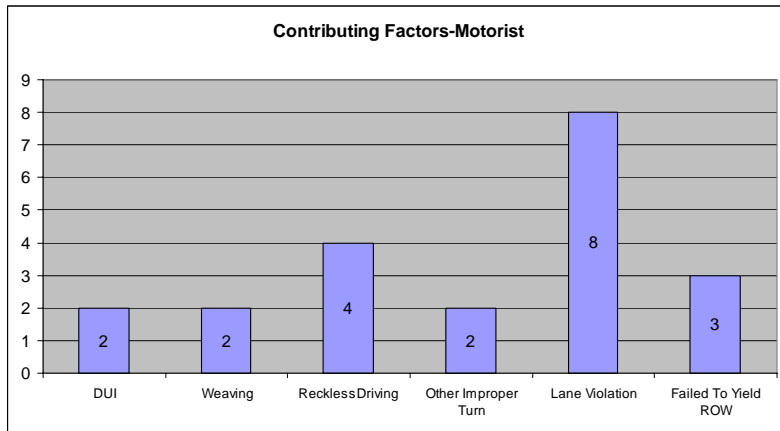
Accidents where a bicyclist hits or is hit by a vehicle traveling in the same direction or opposite direction as the bicyclist or car is changing lanes, passing or weaving.



These accidents are further sub-categorized in the following table.

Sideswipe			
Description	Number of Collisions	Injury Collisions	Fatal
Opposite Direction			
Bike Riding <i>Against</i> Traffic In Street	4	2	1
Total Sideswipe Opposite Direction			
Same Direction			
Bike Riding <i>Against</i> Traffic In Street	2	2	0
Bike Riding <i>With</i> Traffic In Street	21	14	1
Unknown Location of Bike	3	2	
Total Sideswipe Same Direction			
Total	30	20	2

Table 7

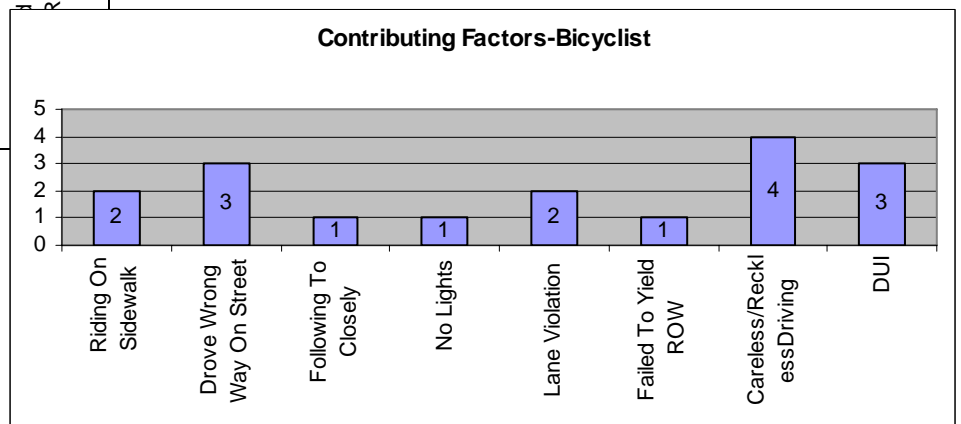
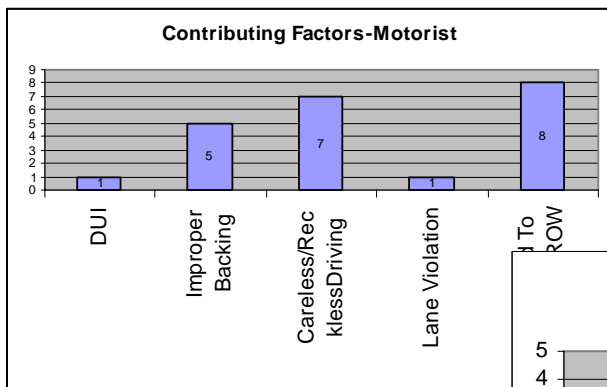


Other Collisions – 31 (8.8%)

These accidents are further sub-categorized in the following table.

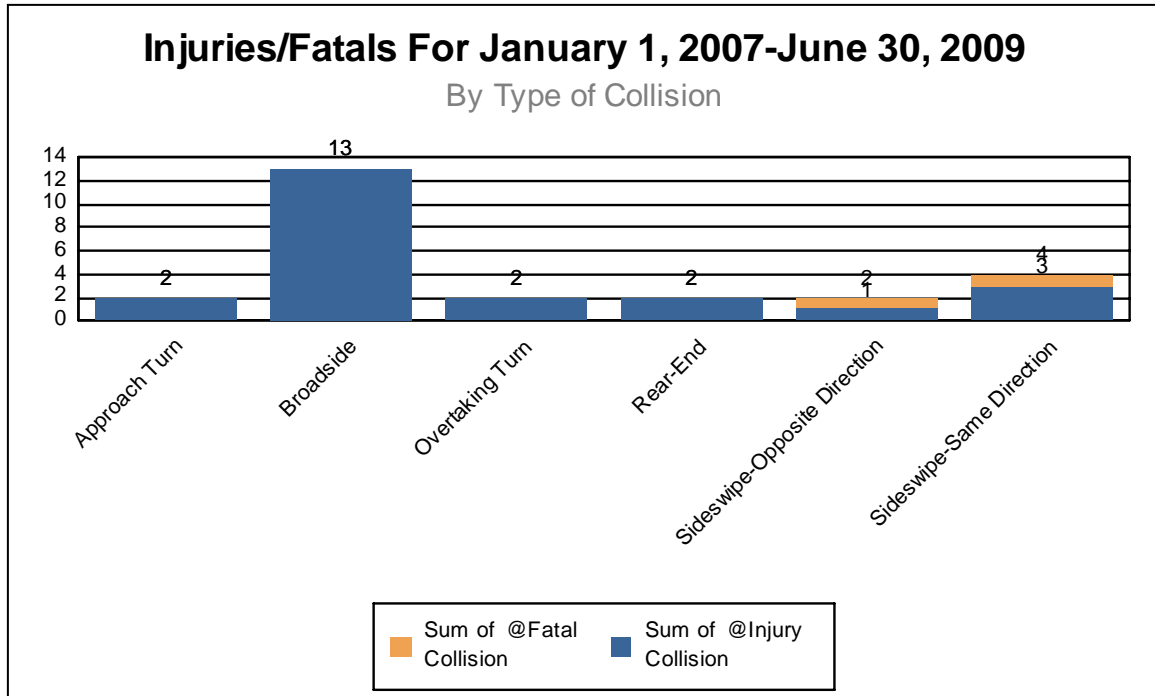
Other Collisions			
Description	Number of Collisions	Injury Collisions	Fatal
<u>Rear-End</u>			
Bike Riding <i>Against</i> Traffic In Street	1		
Bike Riding <i>With</i> Traffic In Street	7	5	
Total Rear-End	8	5	0
<u>Backing</u>			
Bike Riding <i>With</i> Traffic In Street	2	2	
Bike Riding <i>With</i> Traffic On Sidewalk/Crosswalk	1		
Bike Riding <i>Against</i> Traffic On Sidewalk/Crosswalk	1	1	
Unknown Location of Bike	1	1	
Total Backing	5	4	0
<u>Parked Motor Vehicles</u>			
Bike Riding <i>Against</i> Traffic In Street	2	2	
Bike Riding <i>Against</i> Traffic On Sidewalk/Crosswalk	1	0	
Bike Riding <i>With</i> Traffic In Street	5	5	
Total Parked Motor Vehicles	8	7	0
<u>Curb</u>			
Bike Riding <i>With</i> Traffic In Street	1	1	0
TotalCurb	1	1	0
<u>Non Collision</u>			
Bike Riding <i>With</i> Traffic In Street	4	4	
Unknown Location of Bike	3	2	
Total Non Collision	7	6	0
<u>Others - Parked Bikes, No Info</u>			
	2		
Total	31	23	0

Table 8



Severe Injury or Fatal Collisions

Of the 354 bicycle accidents reported between January 1, 2007 and June 30, 2009, twenty five of them were severe injury accidents. As shown below the trends for these serious accidents are similar to those shown above for all accidents.



These accidents are further sub-categorized in the following table.

Severe Injury/Fatal Collisions			
Description		Injury Collisions	Fatal
Approach Turn			
Bike riding with traffic on sidewalk/crosswalk		1	
Bike riding with traffic on street		1	
Total Approach Turn	8.33%	2	0
Broadside			
Bike riding against traffic on sidewalk/crosswalk		2	
Bike riding against traffic on street		5	
Bike riding with traffic on sidewalk/crosswalk		3	
Bike riding with traffic on street		3	
Total Broadside	54.17%	13	0
Overtaking Turn			
Bike riding with traffic on sidewalk/crosswalk		1	
Bike riding with traffic on street		1	
Total Overtaking	8.33%	2	0
Rear-End			
Bike riding with traffic on street		2	
Total Rear End	8.33%	2	0
Sideswipe-Opposite Direction			
Bike riding against traffic on street		1	1
Total Sideswipe-Opposite Direction	8.33%	1	1
Sideswipe-Same Direction			
Bike riding against traffic on street		1	
Bike riding with traffic on street		2	1
Total Sideswipe-Same Direction	12.50%	3	1
Total		23	2